

SUSTAINABILITY • CLIMATE • CYBER •  
ENTREPRENEURSHIP • CINEMA •  
ENGINEERING • ARCHAEOLOGY •  
NEUROSCIENCE • LAW • LIBERAL ARTS •  
MANAGEMENT • LIFE SCIENCES •  
MUSIC • TESOL • ENVIRONMENT •  
SECURITY & DIPLOMACY • DEEP TECH •  
CONFLICT RESOLUTION • PHILOSOPHY •  
PSYCHOLOGY • DIGITAL HEALTH •  
DIGITAL CULTURE & COMMUNICATION

# **THE LOWY** **INTERNATIONAL SCHOOL** PROGRAM GUIDE

STUDY ABROAD | SHORT-TERM | UNDERGRADUATE | GRADUATE | PHD | POSTDOC





## TEL AVIV UNIVERSITY AT A GLANCE

**#1**

Choice Among Israeli Students

**#7**

Of the Top 10 Universities Producing  
VC-Backed Entrepreneurs

**#20**

Faculty Citation Impact

**#6**

In the world  
for graduate-established  
"unicorn" companies  
worth \$1 billion

**100**

Top 100 Innovation University

**#5**

World Ranking  
for Entrepreneurship

## ABOUT TEL AVIV UNIVERSITY

**Tel Aviv University (TAU), Israel's largest and most comprehensive institution of higher learning, is home to over 30,000 students studying in nine faculties and over 130 schools and departments across the spectrum of sciences, humanities, and the arts.**

Consistently ranked in the world's top 20 for scientific citations and among the top 100 universities internationally, Tel Aviv University is also Israel's first choice for students, with its graduates highly sought after by Israeli companies.

Situated in Tel Aviv, Israel's cultural, commercial, and creative center, TAU shares the Mediterranean city's spirit for non-stop discovery, innovation, and community, making it the perfect place for learning and pursuing your passions.

# ABOUT THE LOWY INTERNATIONAL SCHOOL

**At Tel Aviv University,  
learning happens everywhere.**

Tel Aviv University is home to over 2500 international students from nearly 100 countries, making it truly international and global.

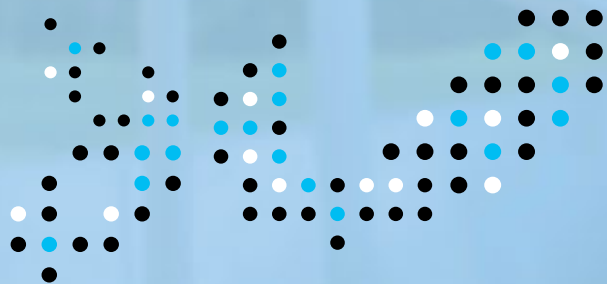
Thousands of talented students study here in over 60 English-taught programs— from a summer, semester, or year abroad, to full Undergraduate, Graduate, and PhD degrees.

Our curriculums are facilitated by Israel's leading faculty and experts and are enhanced by hands-on workshops, professional internships and excursions throughout the country.

## Student Life

Student life at The Lowy International School extends beyond the classroom, where students can immerse themselves in a dynamic setting of Israeli and campus life. Our Community Leaders support students throughout their journey at TAU and empower them to develop their initiatives. This includes orientation on student arrival as well as an impressive range of extracurricular and cultural activities.

**IF YOU ARE  
READY  
FOR  
NON-STOP  
DISCOVERY  
IN ONE OF THE  
MOST EXCITING  
CITIES IN THE  
WORLD,  
TEL AVIV  
UNIVERSITY  
IS YOUR  
DESTINATION!**



WHAT EXPERTS  
HAVE TO SAY ABOUT  
TEL AVIV?

“CAPITAL OF  
MEDITERRANEAN  
COOL”

New York Times

“TOP 10 START-UP  
ECOSYSTEMS”

Venture Beat

“TOP 10 BEACHES”

National Geographic



TEL AVIV  
THE NONSTOP CITY

**Tel Aviv, Israel’s largest metropolitan area, serves as a hub for innovation, culture and creativity.**

*Tel Aviv Nonstop City* is more than just a slogan. With the city’s beautiful beaches, diverse cultural scene, top-notch cuisine, and vibrant nightlife, there’s always something to see and do here.

The city serves as a meeting point between old and new, a mosaic that reflects tradition and history while embracing innovation, pluralism and diversity. It is vibrant, full of life, and provides an endless opportunity for discovery.



*"The MA provided me with theoretical materials and hands-on practical experiences... [I had] the chance to work alongside and learn from practitioners in my field of interest. It was an experience I couldn't have had at almost any university."*

Connor Israel, USA  
MA Conflict Resolution & Mediation



*"Consumer insights was one of my favorite classes of the MBA. We had a lot of hands-on classes where we did projects, working from the beginning of an idea to the execution of it. It was a very intense year, but it was also very rewarding."*

Orly Margulis, Venezuela  
Sofaer Global MBA

## THE LOWY INTERNATIONAL SCHOOL PROGRAMS

### STUDY ABROAD PROGRAMS

Join us for a semester or year abroad, where you can earn full-time academic credit. Our study abroad program is open to undergraduate students enrolled at accredited colleges and universities outside of Israel.

Choose from a broad selection of courses such as:  
**Business • Communications • Creative Writing • Israel Studies • Middle Eastern Studies • Political Science • Languages • Economics • Psychology and more.**

All study abroad semester and year programs are preceded by mandatory Hebrew Ulpan.

Study Abroad Program dates run according to the following semesters:

**Fall** (August – December)

**Spring** (January – May)

**Full Year** (August – May)

**Exploration, Leadership and Innovation (ELI) Gap Year/Semester**

Fall / Spring Semester, Full Year

**Law Program**

Fall / Spring Semester, Full Year

### DEGREE PROGRAMS

Take advantage of our full degree programs taught entirely in English.

#### UNDERGRADUATE DEGREES

- **Liberal Arts BA**  
3-Year Degree
- **Liberal Arts Dual Degree BA**  
4-Year Dual-Degree Program with Columbia University
- **Double Major in Management and Liberal Arts BA**  
3-Year Degree
- **Buchmann-Mehta School of Music BMus**  
4-Year Degree; fully-funded

#### GRADUATE DEGREES

Most programs are one or two years long and offer a thesis option.

- **Ancient Israel Studies MA**
- **Biomedical Engineering MSc**
- **Buchmann-Mehtha School of Music MMus**
- **Coller Deep Tech MBA**
- **Conflict Resolution and Mediation MA**
- **Cyber Politics and Government MA**
- **Digital Health MSc**
- **Disaster Management MDM**
- **Documentary Cinema MFA**
- **Engineering MSc**
- **English Literature and American Studies MA**
- **Environmental Studies MA**
- **Jewish Studies MA**
- **Life Sciences MSc (Individual Tracks)**
- **Medical Sciences MSc (Individual Tracks)**
- **Neuroscience MSc**
- **Parasol Foundation International LLM**
- **Plant Sciences with Emphasis in Food Safety and Security MSc**
- **Security and Diplomacy MA**
- **Social and Policy Aspects of Climate Change MA**
- **Sofaer Global MBA**
- **Sustainable Development MA**
- **TESOL MA (Teaching English to Speakers of Other Languages)**

### ACADEMIC INTEGRATION TRACKS

Academic integration tracks offer a distinctive educational path, allowing new olim to start their studies in English and complete them in Hebrew.

#### THE TRACKS OFFERED:

- **BSc in Engineering: Electrical/Mechanical**
- **BA in Management and Liberal Arts**

For more information visit our website or the Israeli Student Authority  
<https://govextra.gov.il/moia/academic-programs-in-english/home/>

For the most up-to-date information, please visit our website:  
**[international.tau.ac.il](https://international.tau.ac.il)**

## SHORT-TERM PROGRAMS

Dive into our range of short-term academic programs to excel in your academic and professional career.

### SUMMER PROGRAMS

- Archaeological Excavations
- Business & Entrepreneurship
- Middle East & Israel Studies
- Research Program in the Humanities & Social Sciences
- Research Program in the Sciences
- Summer Internship

### GRADUATE & PROFESSIONAL PROGRAMS

- Advanced Epidemiology and Preventive Medicine
- The Food Safety and Security Summer Institute
- Medical Research Internship

### LANGUAGE PROGRAMS

Language programs are open to all students or professionals holding a high school diploma or higher.

#### Intensive Hebrew Ulpan

- TAKA: Preparatory Program to Study in Hebrew (March – July)
- Summer/Winter Intensive Ulpan (All levels)
- Summer Ulpan (All levels)
- Fall/Spring Semester Hebrew Language Course (All levels)

#### The Naomi Prawer Kadar International Yiddish Summer Program

- Intensive Yiddish Program (All levels)

#### Academic English (B-2)

The 4-credit course includes two sections:

- Academic English – Reading and Writing
- Academic English – Listening and Speaking

## RESEARCH PROGRAMS

### MSc RESEARCH PROGRAMS

Many of our graduate research programs in the sciences are available in English.

### DOCTORAL PROGRAMS

As a PhD or Postdoc student at TAU, you will be joining a diverse community of top researchers from around the globe. You will be able to conduct your research entirely in English in numerous disciplines:

**Medicine • Life Sciences • Physics and Astronomy • Chemistry • Mathematics • Computer Sciences • Geophysics and Planetary Sciences • Engineering • History • Environmental Studies • Cultural Studies • Philosophy • Education • Social Sciences • Management • Arts • Law • Jewish Studies • Neuroscience • Psychology**

The duration for PhD and Postdoctoral tracks is generally three to five years from the time of registration to thesis submission. For more information contact: [gilah@tauex.tau.ac.il](mailto:gilah@tauex.tau.ac.il)

### VISITING RESEARCHERS AND STUDENTS

Tel Aviv University welcomes visiting students to join us for research opportunities on campus. You will be able to enjoy benefits such as health insurance, extracurricular activities, and on-campus housing for an additional fee.

For more information contact: [intlprojects@tauex.tau.ac.il](mailto:intlprojects@tauex.tau.ac.il)

**SPEND THE SUMMER  
IN TEL AVIV,  
ISRAEL'S CULTURAL  
AND TECHNOLOGICAL  
HUB OF NON-STOP  
DISCOVERY**

For information  
on Admissions,  
Housing, Student  
Life, and more,  
please visit our  
website

## START YOUR PATH TO NON-STOP DISCOVERY AT TAU

### Study

at one of the world's top  
innovation universities

### Choose

from 60+ English-led academic  
programs and degrees

### Explore

the rich history and heritage  
of the Start-up Nation

### Live

the non-stop Tel Aviv lifestyle  
of culture and innovation

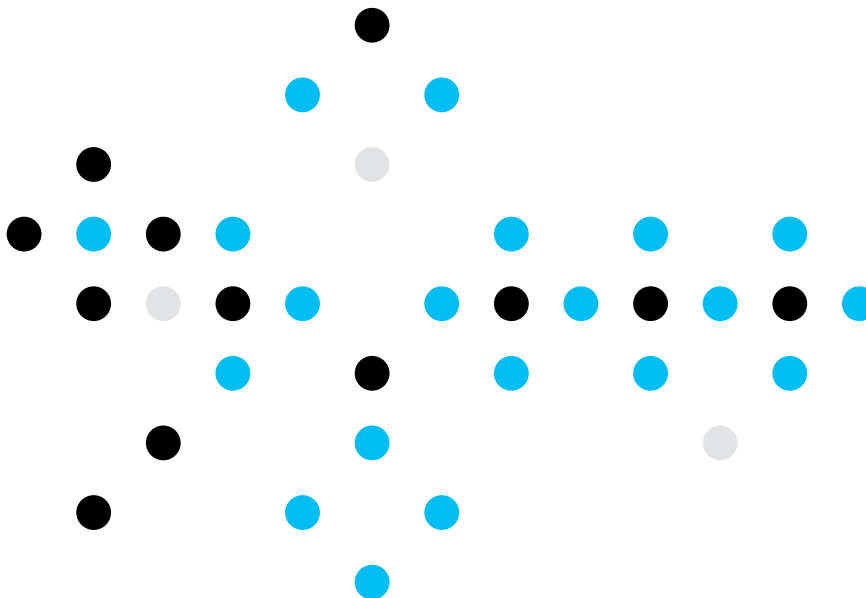
### Connect

with a global network of  
students from 100+ countries

### Create

your own experience that is  
unique and transformative





Tel Aviv University  
The Lowy International School  
T +972 (0) 3 640 8118  
Email: [study@tauex.tau.ac.il](mailto:study@tauex.tau.ac.il)

Tel Aviv University  
The Lowy International School  
8 West 40th Street, 8th Floor  
New York, NY 10018  
T +1 (212) 742-9030  
Email: [info@telavivuniv.org](mailto:info@telavivuniv.org)

Ref: 2025/26 V1

